



GTANSW Conference
August 2011

HAZARDS AND SPATIAL TECHNOLOGIES



Mick Law

mob: 0431 665 879

email: info@contoureducation.com

web: www.contoureducation.com

ABN: 53 291 663 718

The technology of “where”!

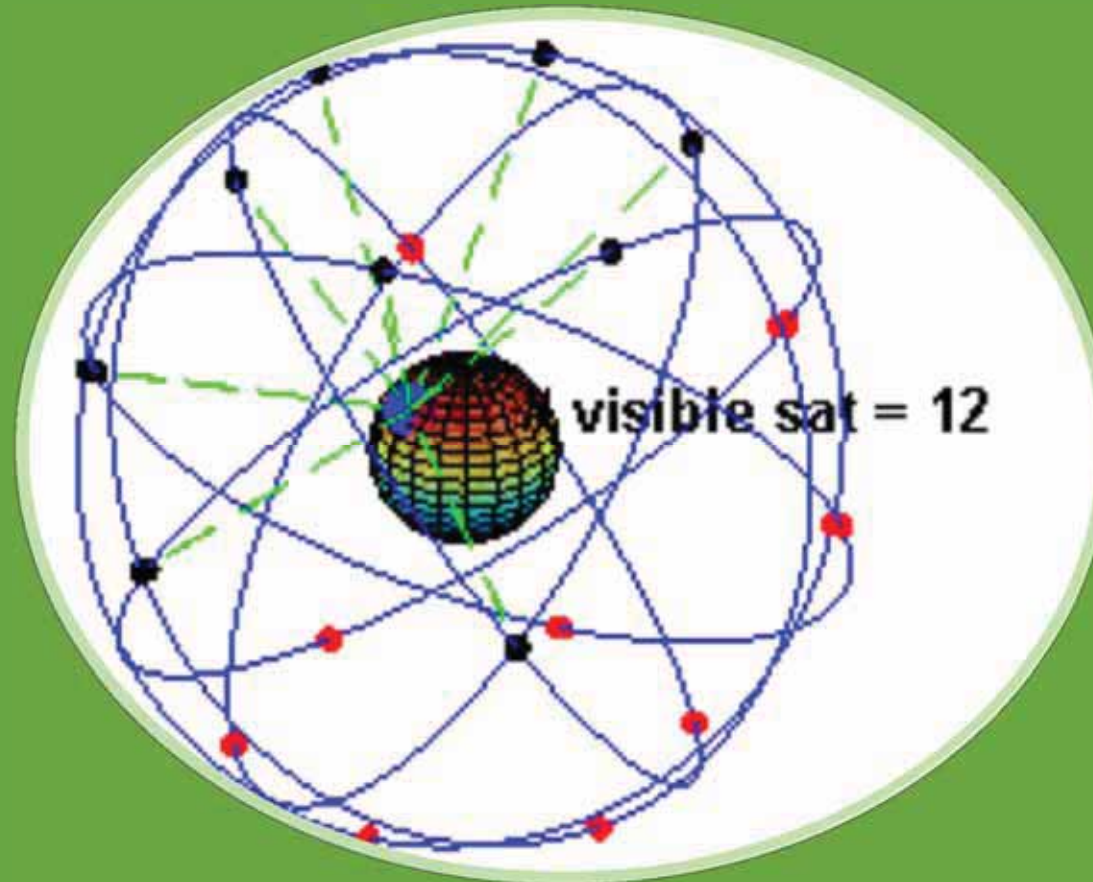
What are Spatial Technologies?

Spatial
Technologies

Examples

Teaching

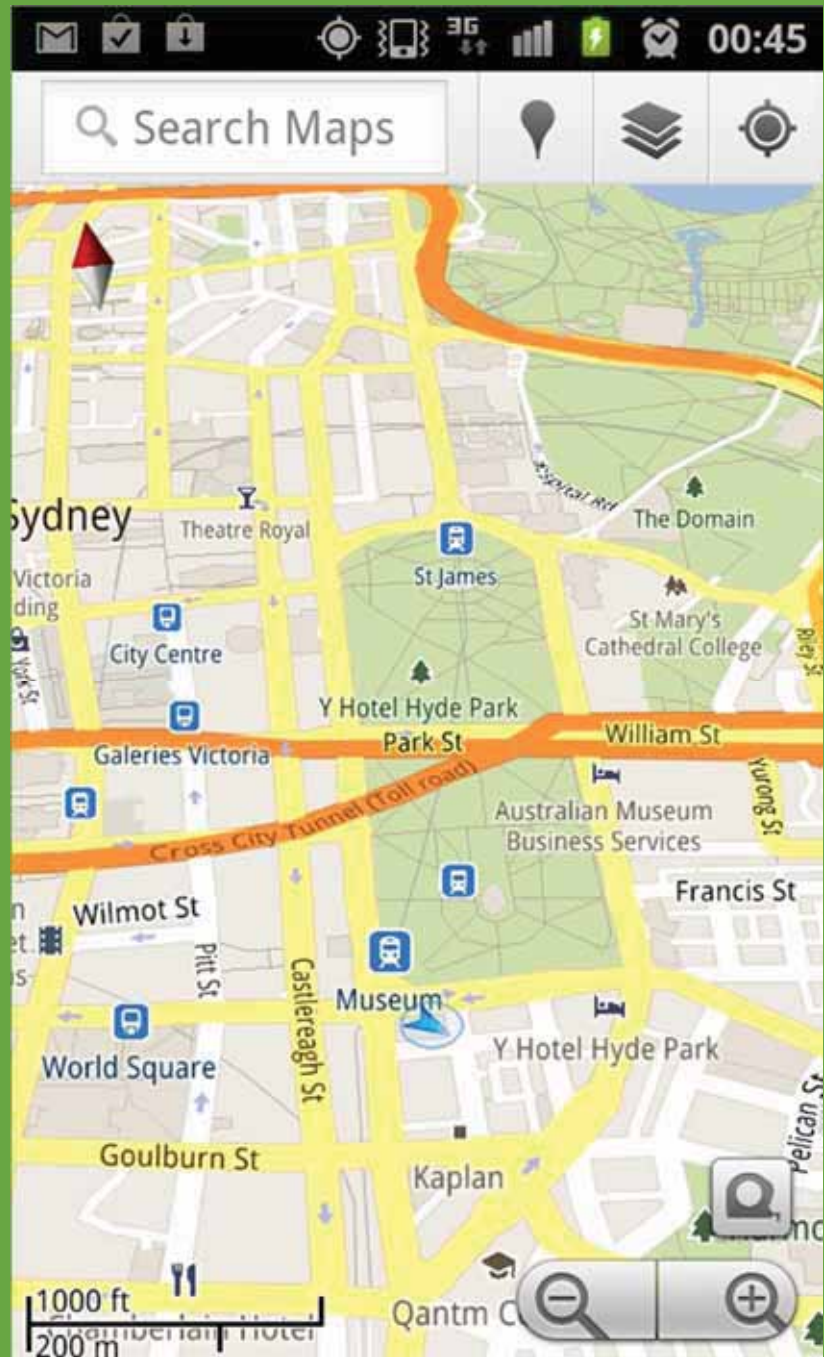
GPS



Spatial
Technologies

Examples

Teaching



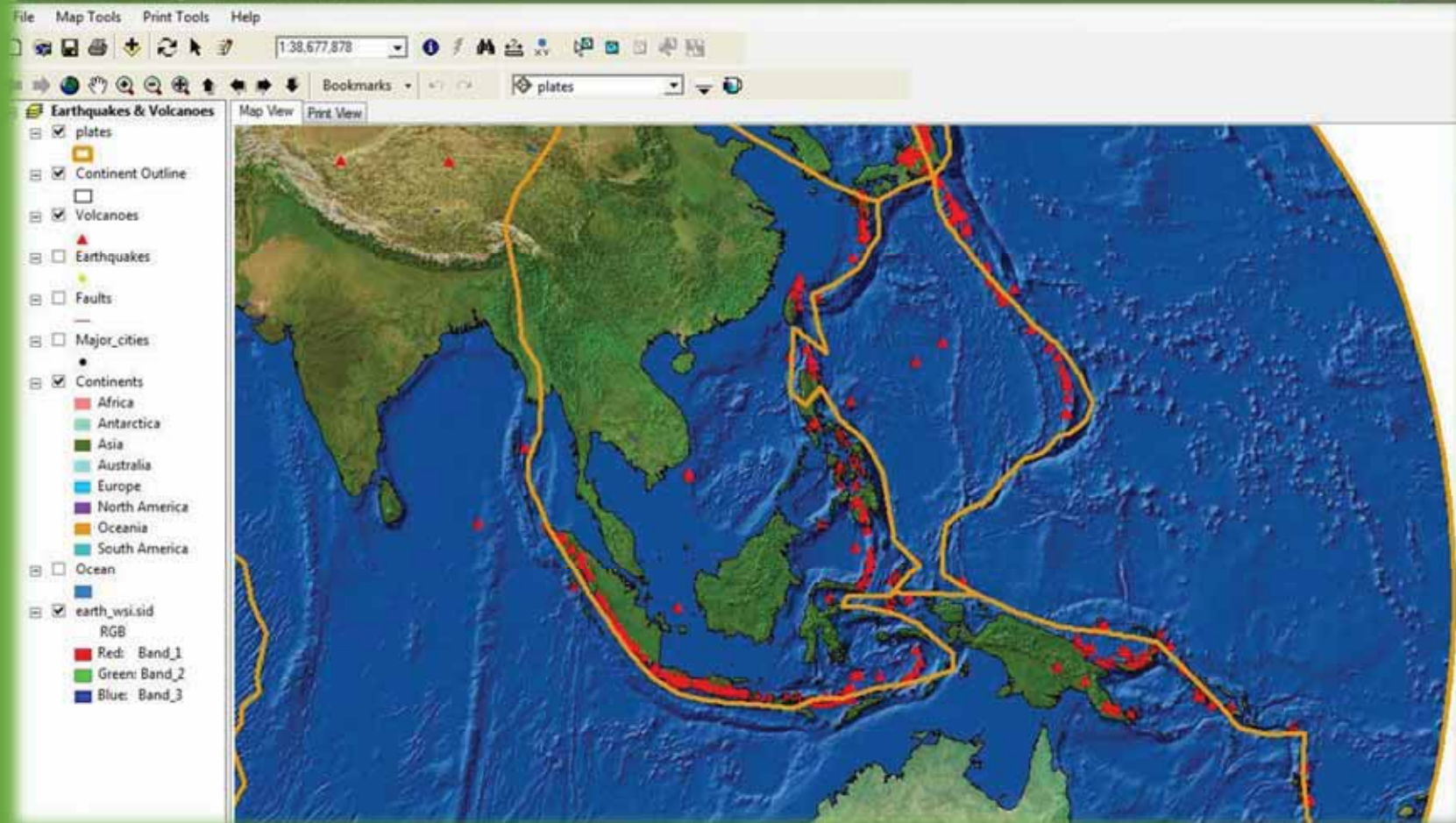


Spatial
Technologies

Examples

Teaching

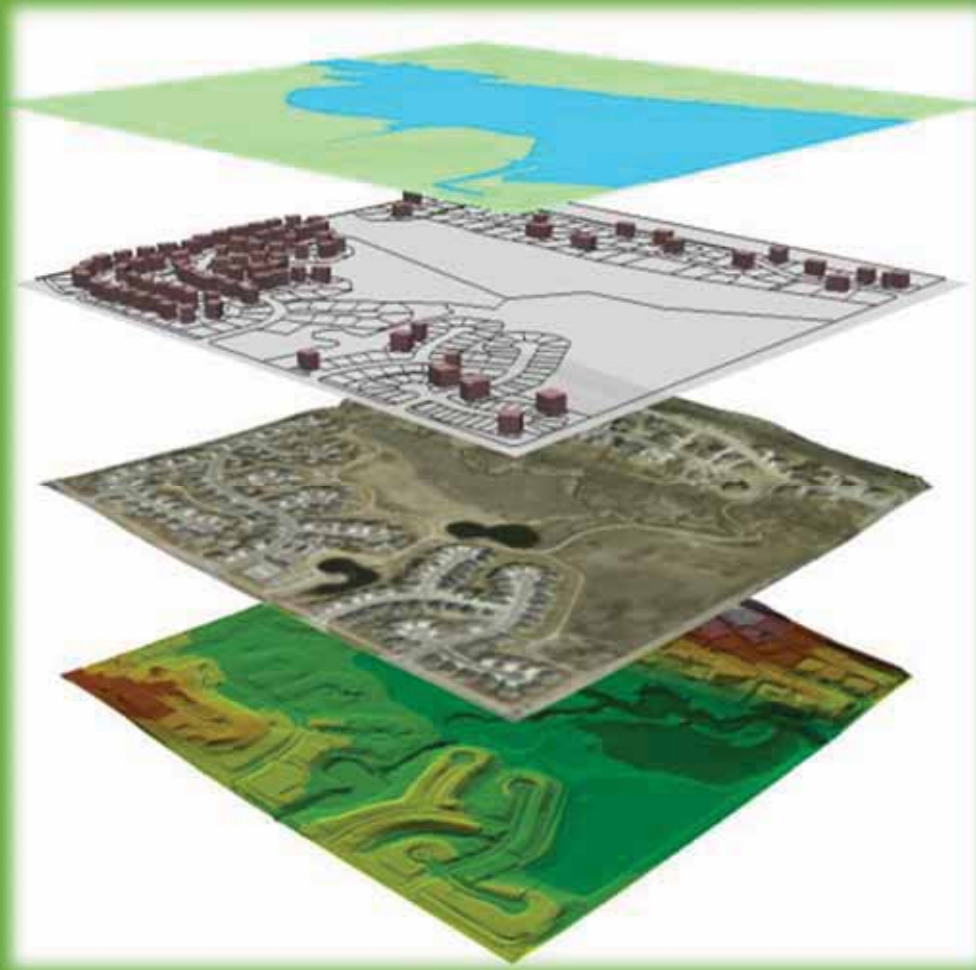
GIS



Spatial
Technologies

Examples

Teaching



Spatial
Technologies

Examples

Teaching

Remote Sensing



Spatial
Technologies

Examples

Teaching

"In many cases, successful emergency response starts with a map. The question of "where" is fundamental to assessing risks, planning for hazards, responding effectively to incidents, deploying resources and assisting communities to recover." Spatial Vision, 2011.

Real Life Examples

Spatial
Technologies

Examples

Teaching

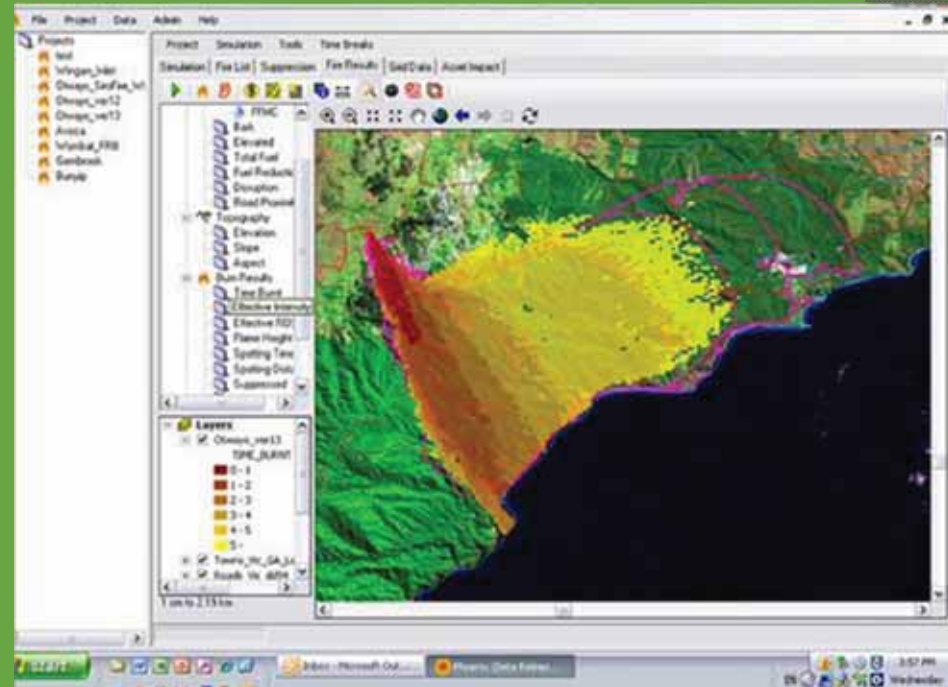
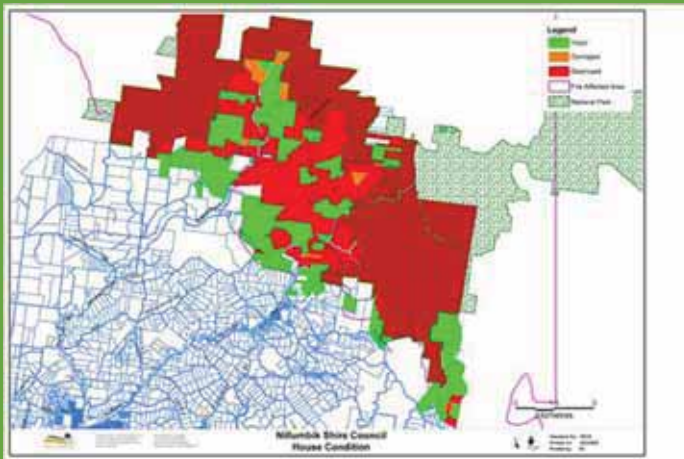


Spatial
Technologies

Examples

Teaching

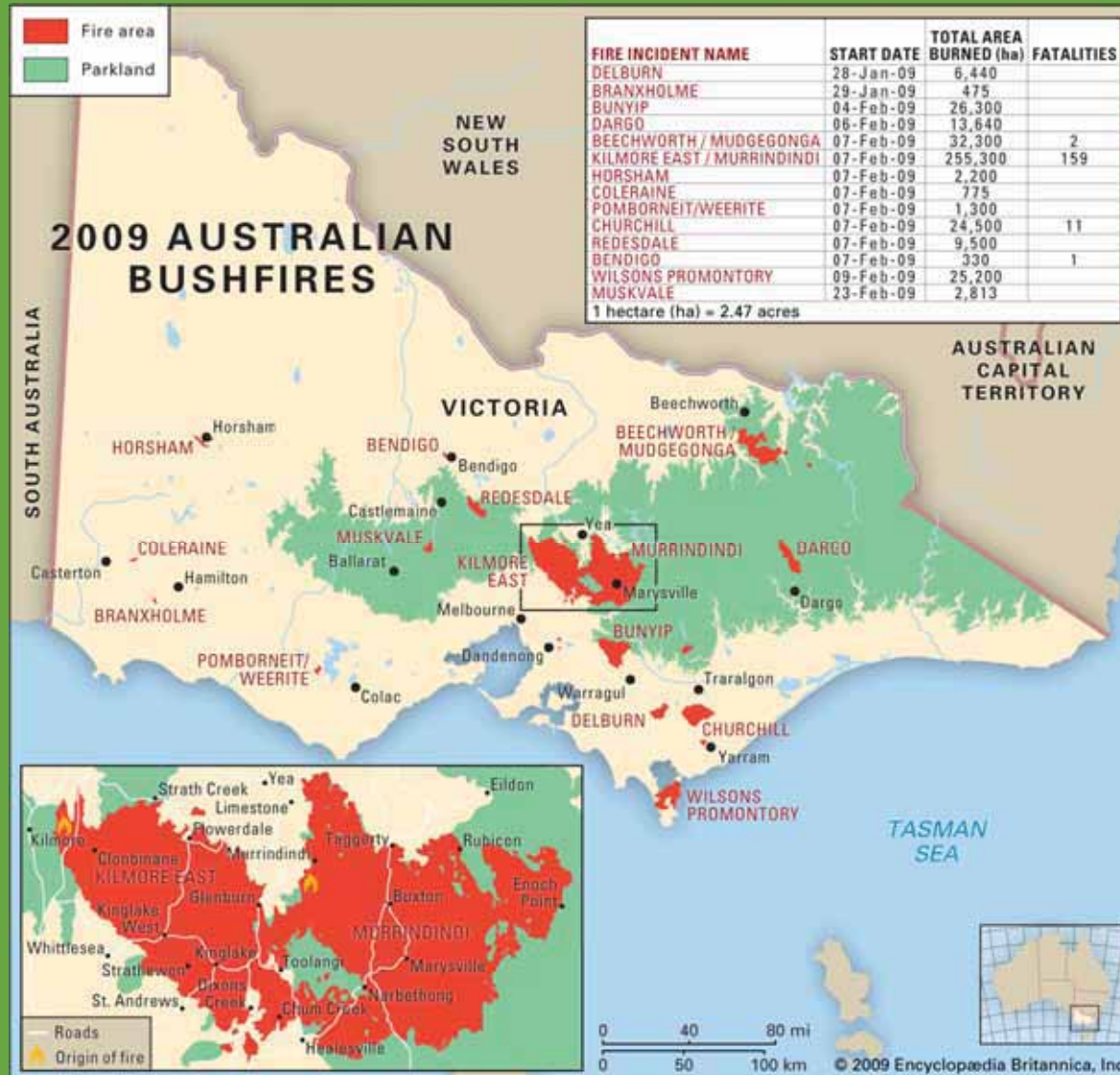
Black Saturday



Spatial
Technologies

Examples

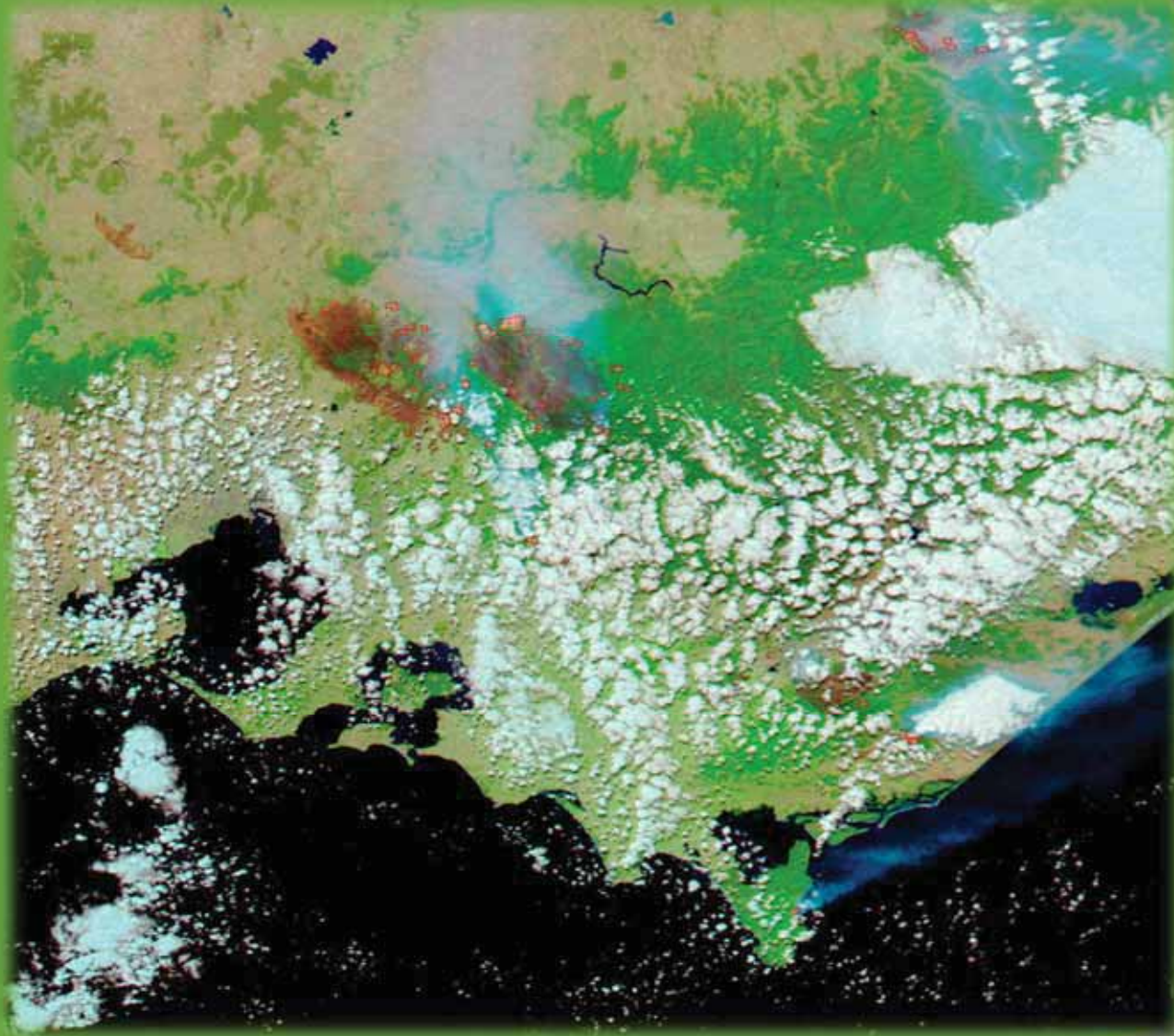
Teaching



Spatial Technologies

Examples

Teaching



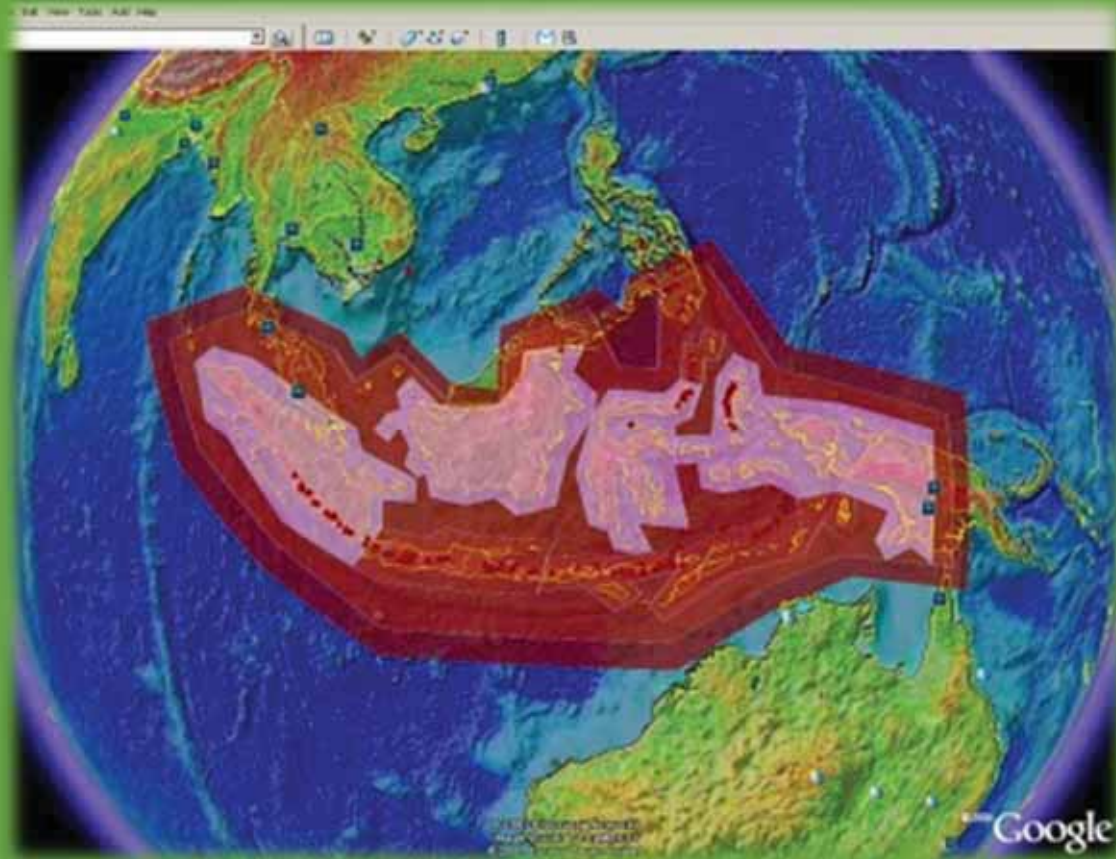
Source: NASA Earth
Observatory

Spatial
Technologies

Examples

Teaching

Earthquake Monitoring



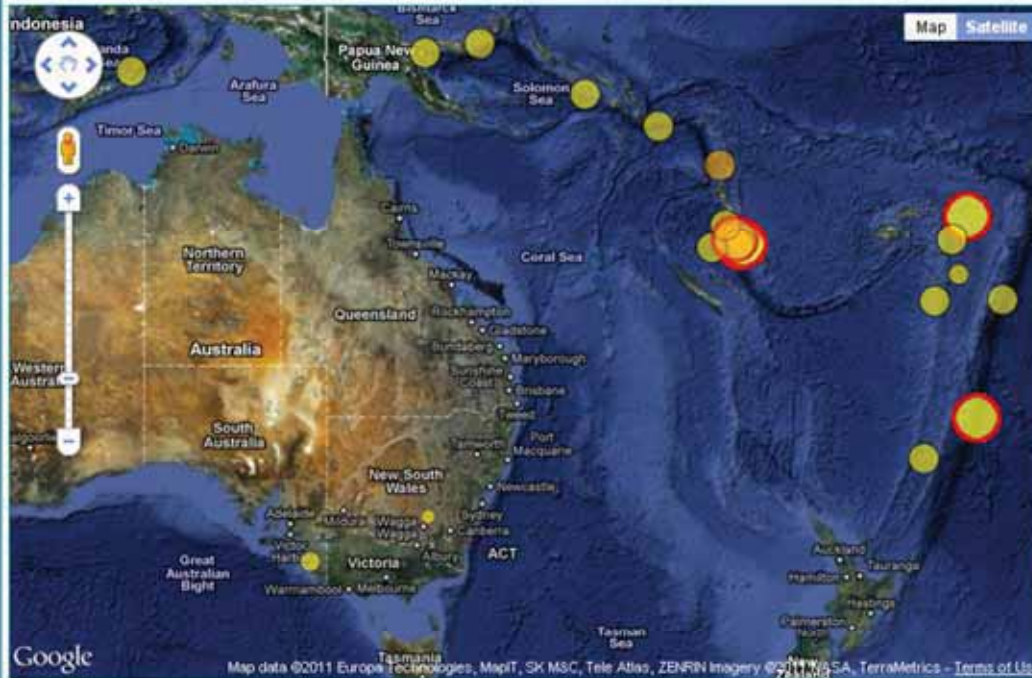
Spatial
Technologies

Examples

Teaching

Earthquakes @ Geoscience Australia

Australia and region — Last 7 days



Map Satellite

Significant earthquake

Age of Earthquake

Last 4 hours

Last 24 hours

Older

Magnitude



Tools



RSS Feed



KML Feed

Important

Read about the [limitations](#) of this data

Significant earthquakes

M6.4 Vanuatu Islands.

Sydney time: 25 August 09:06
UTC time: 24 August 23:06

M7.0 Northern Peru.

Sydney time: 25 August 03:46
UTC time: 24 August 17:46

M6.1 Southwest of Sumatra, Indonesia.

Sydney time: 23 August 06:12
UTC time: 22 August 20:12

M6.0 Kermadec Islands Region.

Sydney time: 22 August 19:38
UTC time: 22 August 09:38

Key contacts

Urgent emergency assistance in Australia
Phone: 000 (Triple Zero)

Other assistance
State Emergency Service
Phone: 132 500

Tsunami information
Joint Australian Tsunami Warning Centre
Phone: 1300 TSUNAMI
or 1300 878 6264
Web: [Visit JATWC Site](#)

Check on someone overseas
[Department of Foreign Affairs and Trade](#)
Within Australia: 1300 555 135
From overseas: +61 2 6261 3305

Earthquake information
Geoscience Australia
Within Australia: 1800 655 739
From overseas: +61 2 6249 9699
Email: earthquakes@ga.gov.au

Earthquake activity



Recent earthquakes
In Australia, the region and the world.



Report it
Felt an earthquake?
Seen damage?



Search
Search our earthquake database.



Lists
Of significant earthquakes.



Notifications
Be informed when earthquakes occur.

About earthquakes

The effects of an earthquake depend on many factors, such as the distance from the epicentre and the local ground conditions.

What is an earthquake?

What causes earthquakes?

Where do Earthquakes occur?

Earthquake hazard

Find out about the hazards and risks that are caused by earthquakes in and around Australia.

How do we model Exposure?

How do we model Vulnerability?

How do we estimate Risk and Impact?

Earthquake monitoring

Earthquakes are one of the natural hazards which Geoscience Australia monitors and assesses in order to inform risk mitigation and emergency management activities.

Why we monitor earthquakes

How we monitor earthquakes

Emergency management

Emergency Management is represented by a range of measures which have been designed for the management of risks to communities and to the environment.

Prevention and Mitigation

Preparedness

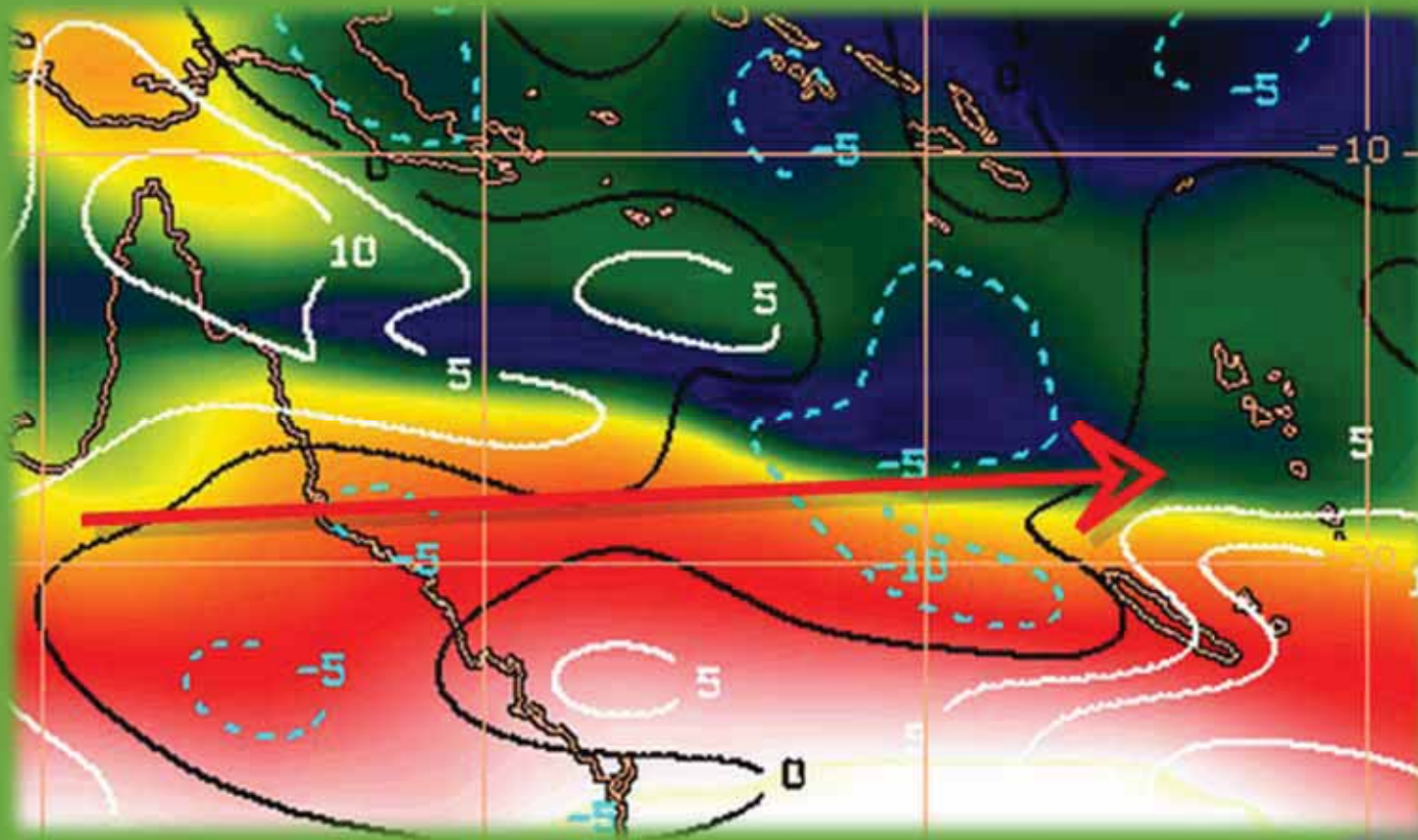
Spatial Technologies

Examples

Teaching

Source: Geoscience Australia website, August, 2011.

Cyclone Tracking

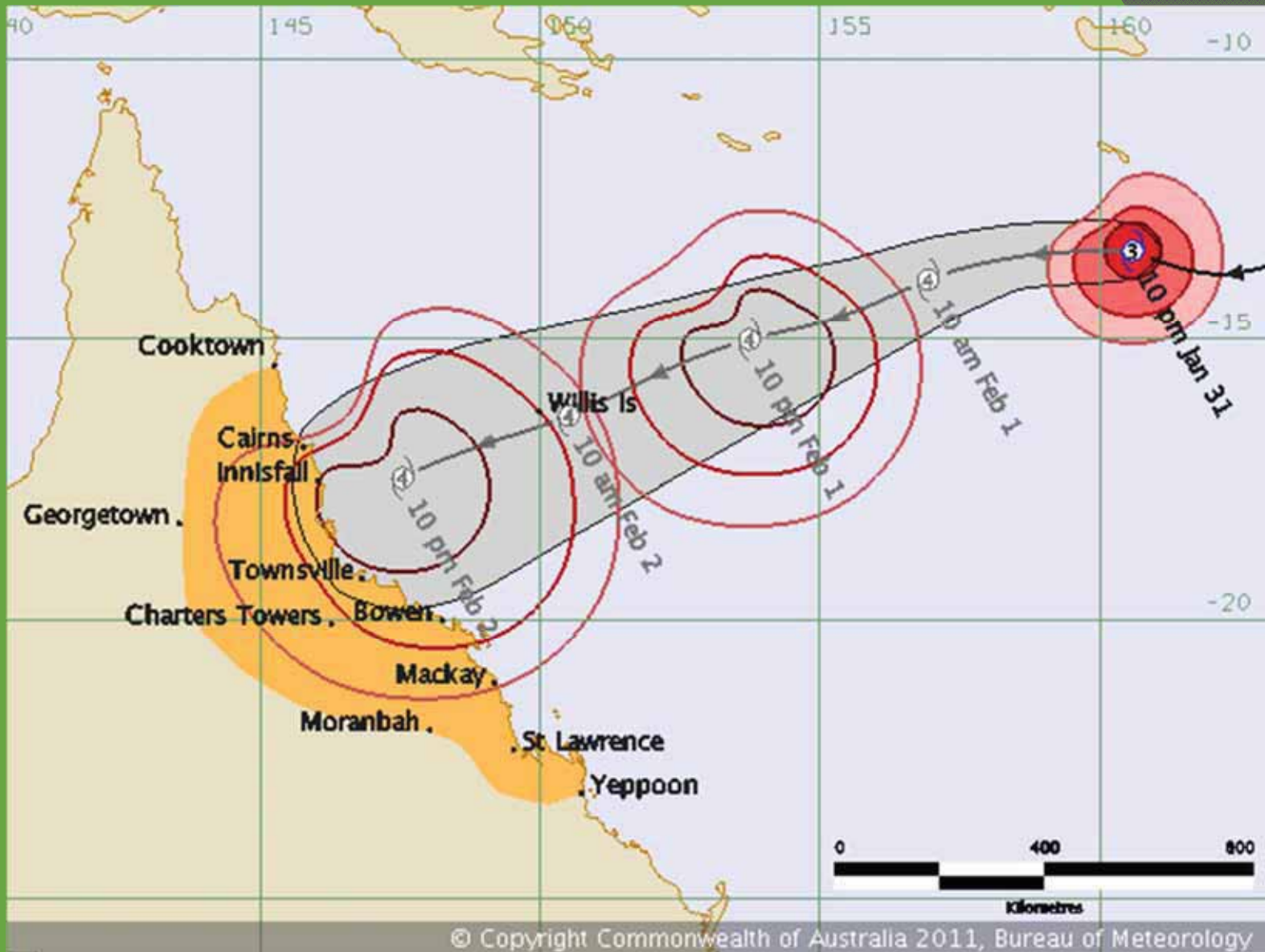


Source: 28storms.com

Spatial
Technologies

Examples

Teaching



Spatial
Technologies

Examples

Teaching

Supporting Materials

- Spatial technologies allow users to create a range of materials that can be used in the immediate and long-term response to the hazard
- Planning, infrastructure, landuse, demographics

Spatial
Technologies

Examples

Teaching

Get directions My places

Save to My Places

Black Saturday

On February 7, 2009, vast swathes of the Victorian landscape were reduced to cinders when the Black Saturday bushfires swept across the state, killing 173 people, injuring hundreds more, and leaving thousands homeless.

Public - 2,592 views
Created on Jan 29, 2010 By SBS Updated Feb 5, 2010

Rate this map Write a comment - KM



Horsham

Fire broke out on the western outskirts of Horsham shortly after 12 noon on Black Saturday. The blaze raged to the south of the town, destroying 68 homes and burning through 2,200 hectares of land...



Coleraine

A blaze broke out on farmland to the north-west of Coleraine at about 12.30 on February 7. The fire destroyed one house, and burned through 775 hectares of land, briefly threatening to spread into th...



Weente - Pombornit

Firefighters were called to a blaze west of Pombornit shortly after 1pm on Black Saturday. Roads were closed and trains canceled when the fire crossed the Geelong to Warrnambool railway line. Flames...



Bunyip State Park

Lightning sparked several fires in Bunyip State Park on the afternoon of Wednesday February 4. They were still burning by the end of the week, and in the early hours of Black Saturday, the blaze broke...



Churchill - Callignee - Hazelwood South

Witnesses reported seeing a fire in a blue gum plantation south-east of Churchill at 1.30pm on Black Saturday. The blaze - which is believed to have been deliberately set by an arsonist - raced through...



Bendigo

Fire crews were called to a blaze at Bracewell Street, on the outskirts of Bendigo, shortly after 4.30pm on Black Saturday. The blaze burned around homes and through scrubland, killing one person and...



Redesdale

Eyewitnesses spotted smoke and flames at Redesdale shortly after 3pm on Saturday February 7. Residents living nearby were warned to activate their fire plans, as the fire destroyed seven...

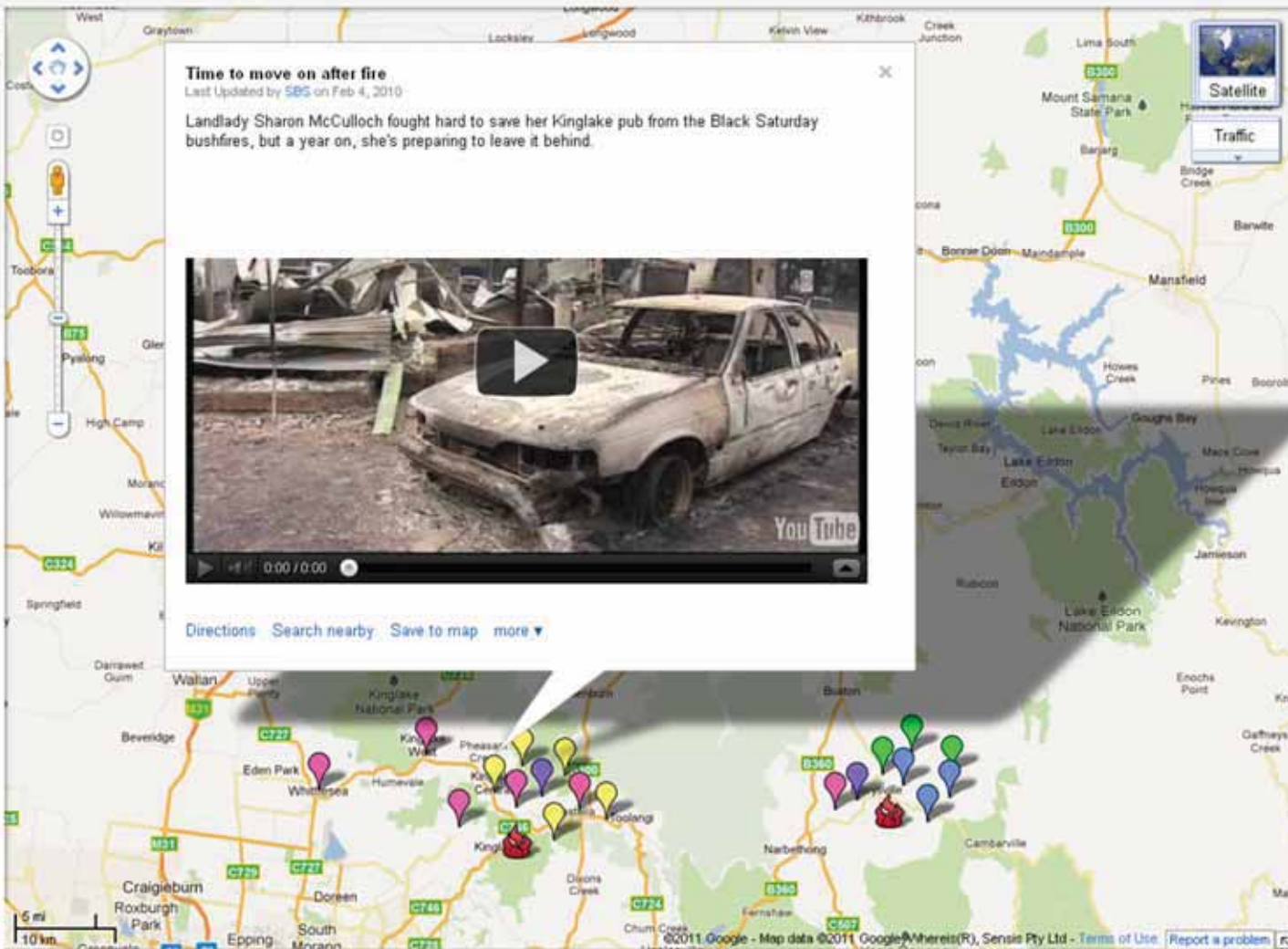
Time to move on after fire

Last Updated by SBS on Feb 4, 2010

Landlady Sharon McCulloch fought hard to save her Kinglake pub from the Black Saturday bushfires, but a year on, she's preparing to leave it behind.



Directions Search nearby Save to map more ▾



After Bushfires - www.ask.com - Get After Bushfires Find After Bushfires

Ad

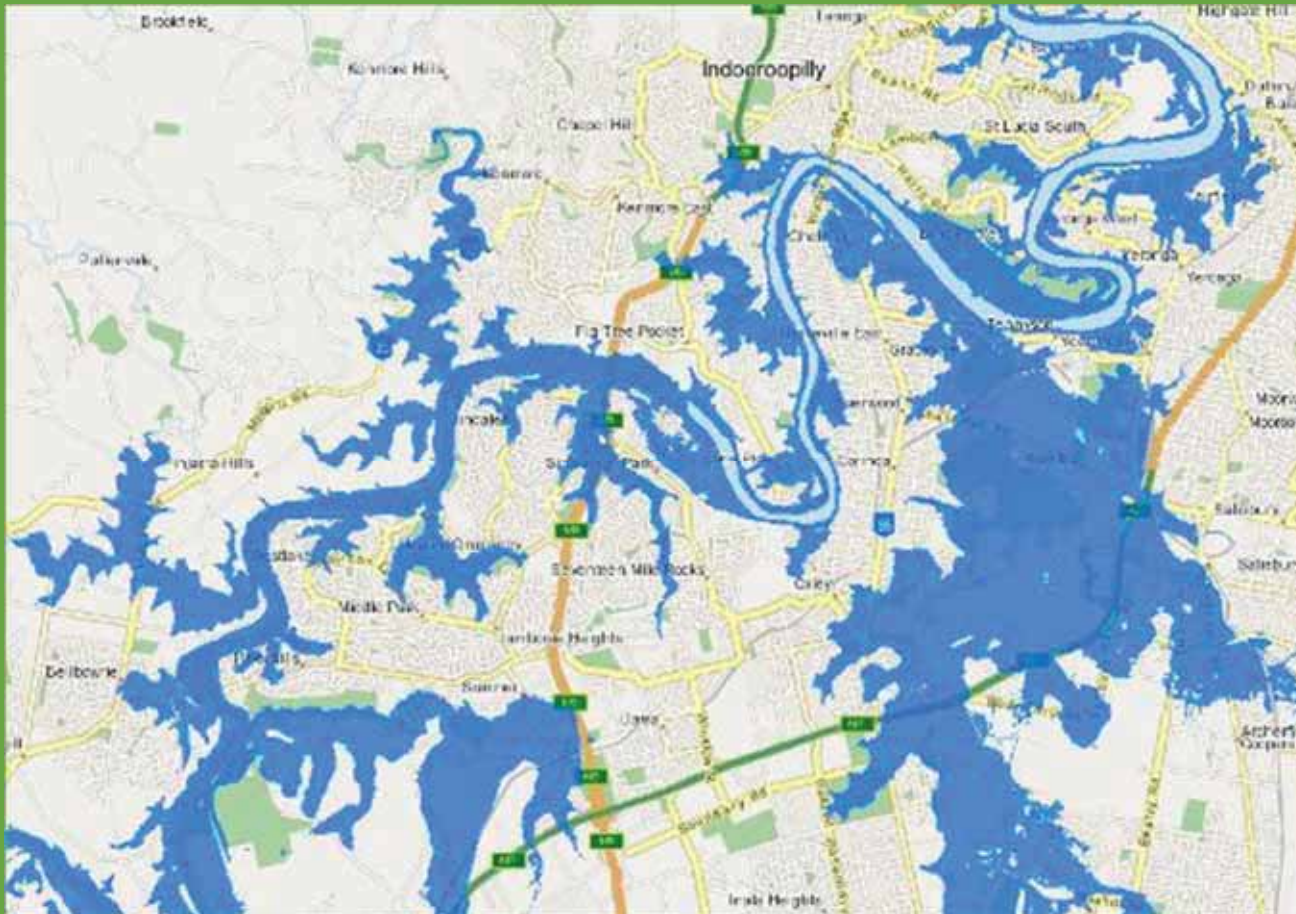
Spatial Technologies

Examples

Teaching

Source: Google Maps and SBS

Queensland Floods 2011

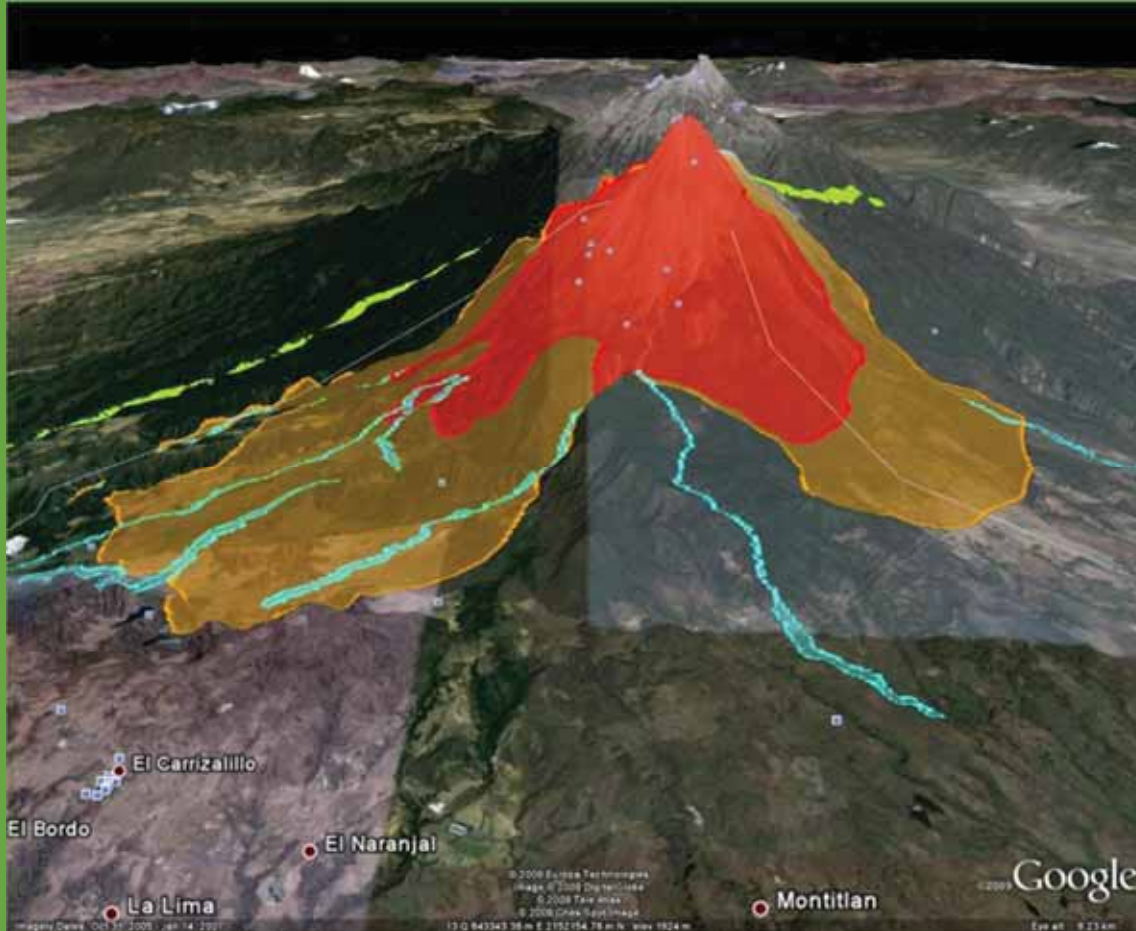


Spatial
Technologies

Examples

Teaching

Google Earth



Source: Universidad Nacional Autonoma De Mexico

Spatial
Technologies

Examples

Teaching

Teaching *about* Hazards with Spatial Technologies

Spatial
Technologies

Examples

Teaching

Resources

- Contour Education Sentinel activity
- Queensland Floods 2011
- Fukushima disaster and Christchurch Earthquake
- Google Maps and Google Earth
- GIS Packages

Spatial
Technologies

Examples

Teaching

Questions?